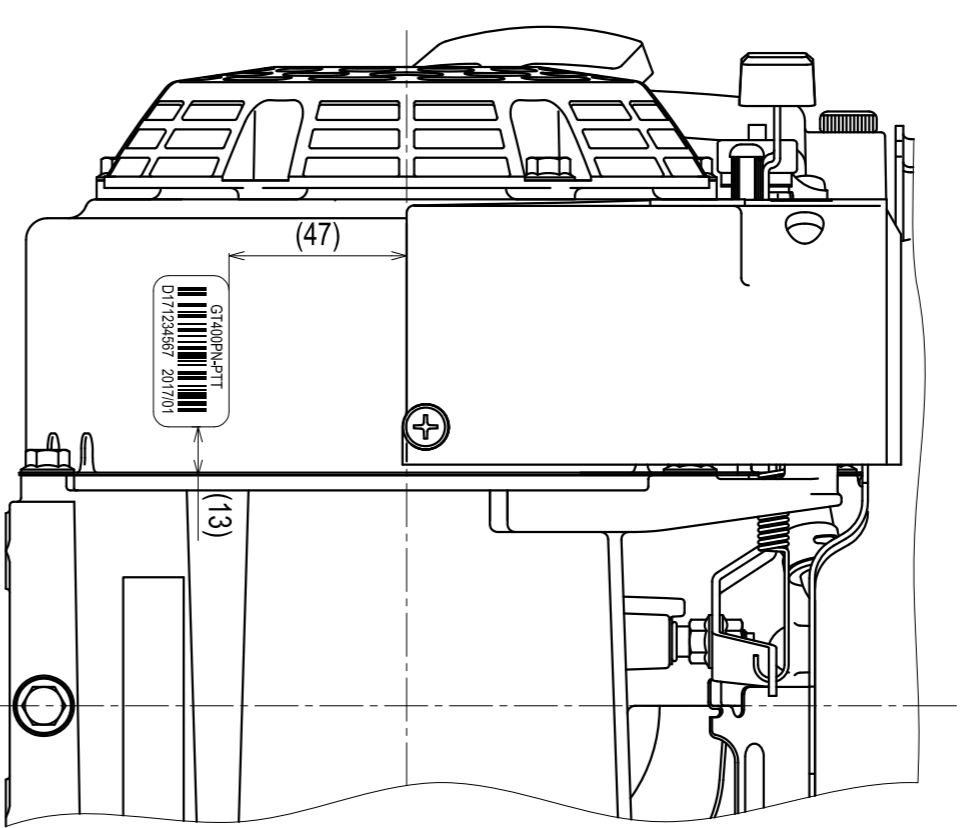
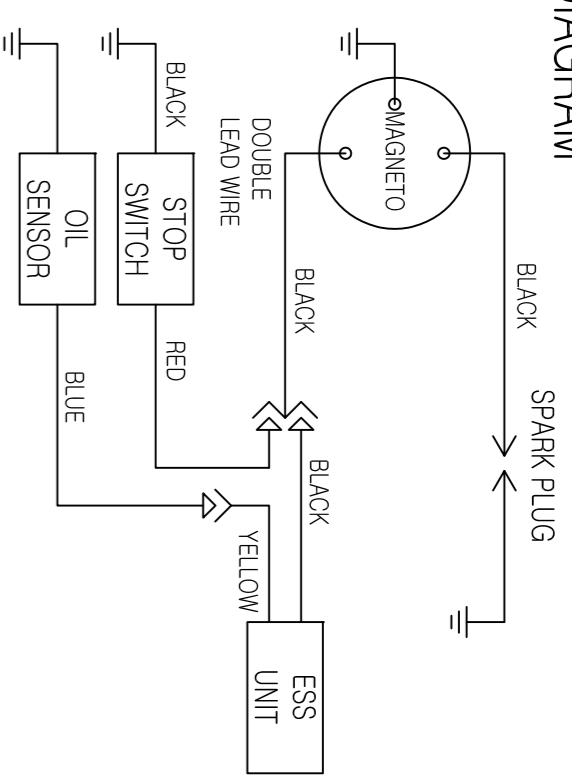


SPECIFICATIONS

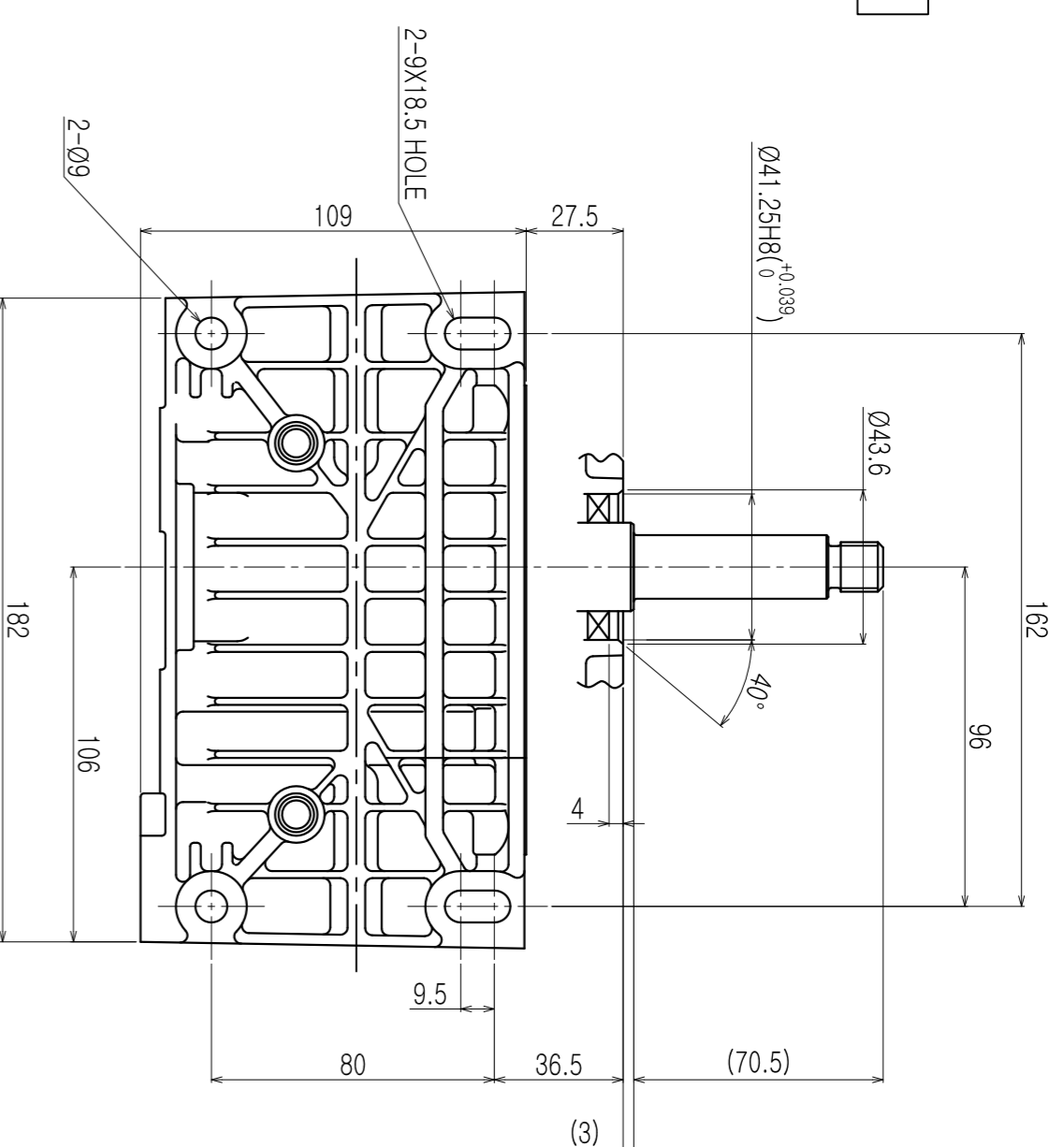
Type	Air-Cooled 4Stroke-OHV Gasoline Engine with Start Cylinder	
Number of Cylinder	(mm)	1-62 X 42
-Bore X stroke	(cm³)	127
Displacement	kw/rpm	2.1/3600
Continuous Rated Output	(PS/rpm)	(2.8/3600)
Maximum Output	kw (PS)	2.9 (4.0)
Maximum Torque	N.m/rpm (kgf-m/rpm)	7.65/2800 (0.78/2800)
PTO Shaft Rotation	Counter-Clockwise facing PTO	
Fuel	Unleaded Automobile Gasoline	
Fuel Tank Capacity	(L)	2.5
Lubricating Oil	Engine Oil SE Class or Higher	
Lubricating Oil Capacity	(L)	0.6
Carburetor	Float, Butterfly valve · Sideways suction Type	
Ignition system	Breaker less Ignition Type, Flywheel Magneto	
Spark Plug	NGK-BPR6HS equivalent(E6RTC)	
Starting System	Recoil Starter	
Governor System	All Speed Mechanical Governor	
Lubricating System	Compulsive Splash Type	
Air Cleaner	Polyurethane Type	

(Notes1) *markshows the valueof a standard equipment state.
 (Notes2) Rotation speed is the one at the output shaft.

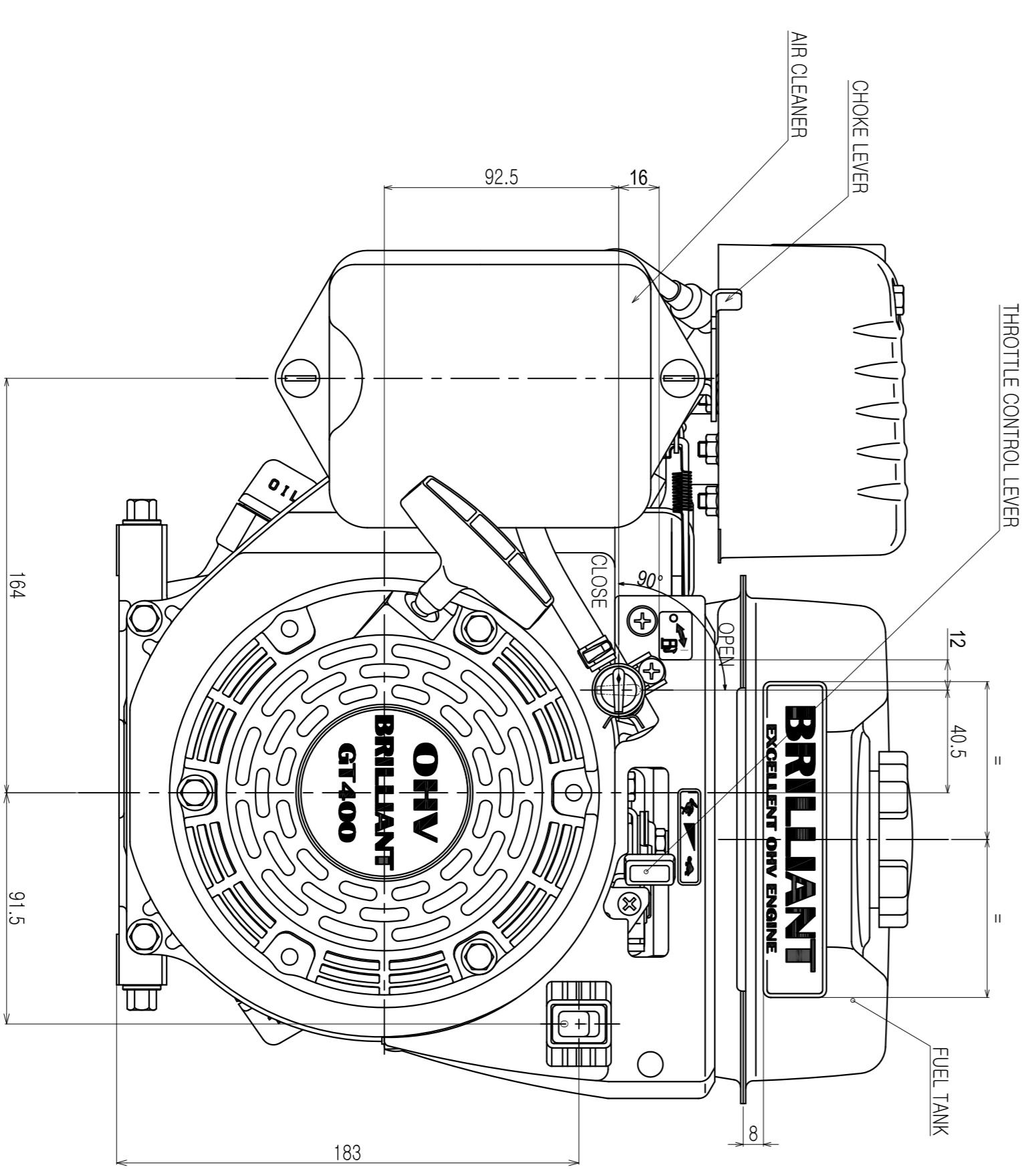
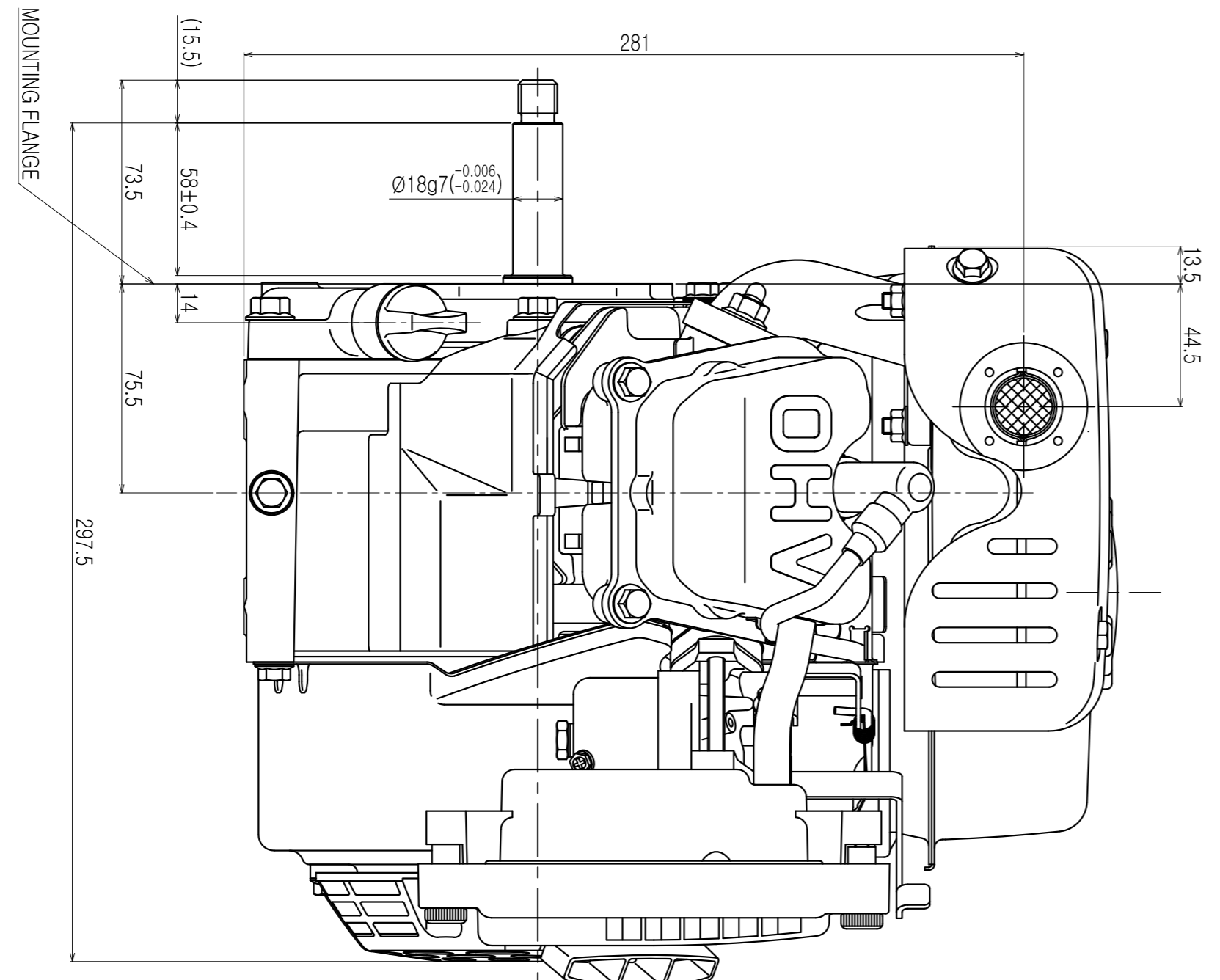
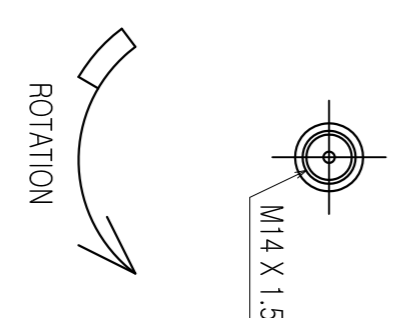
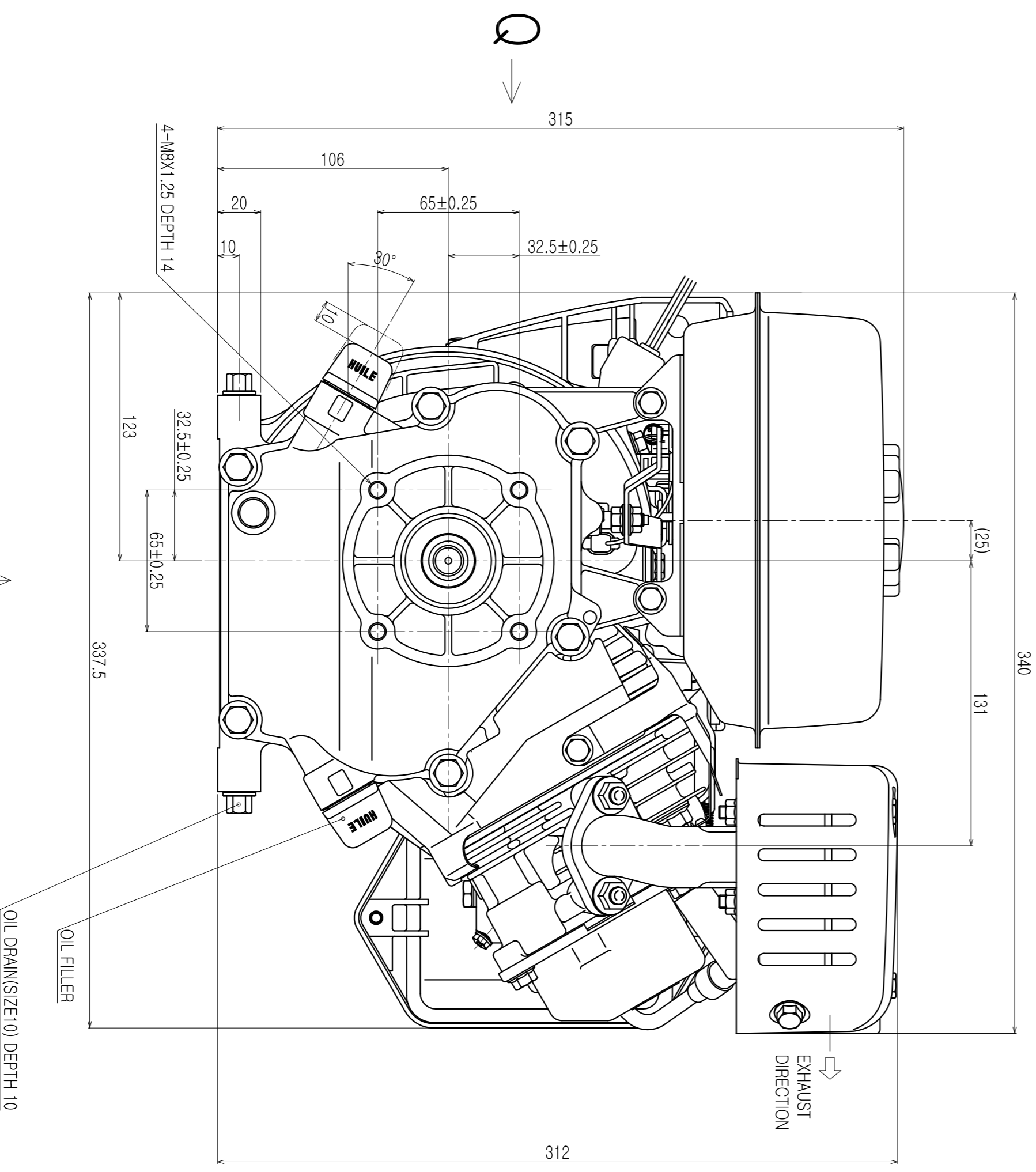
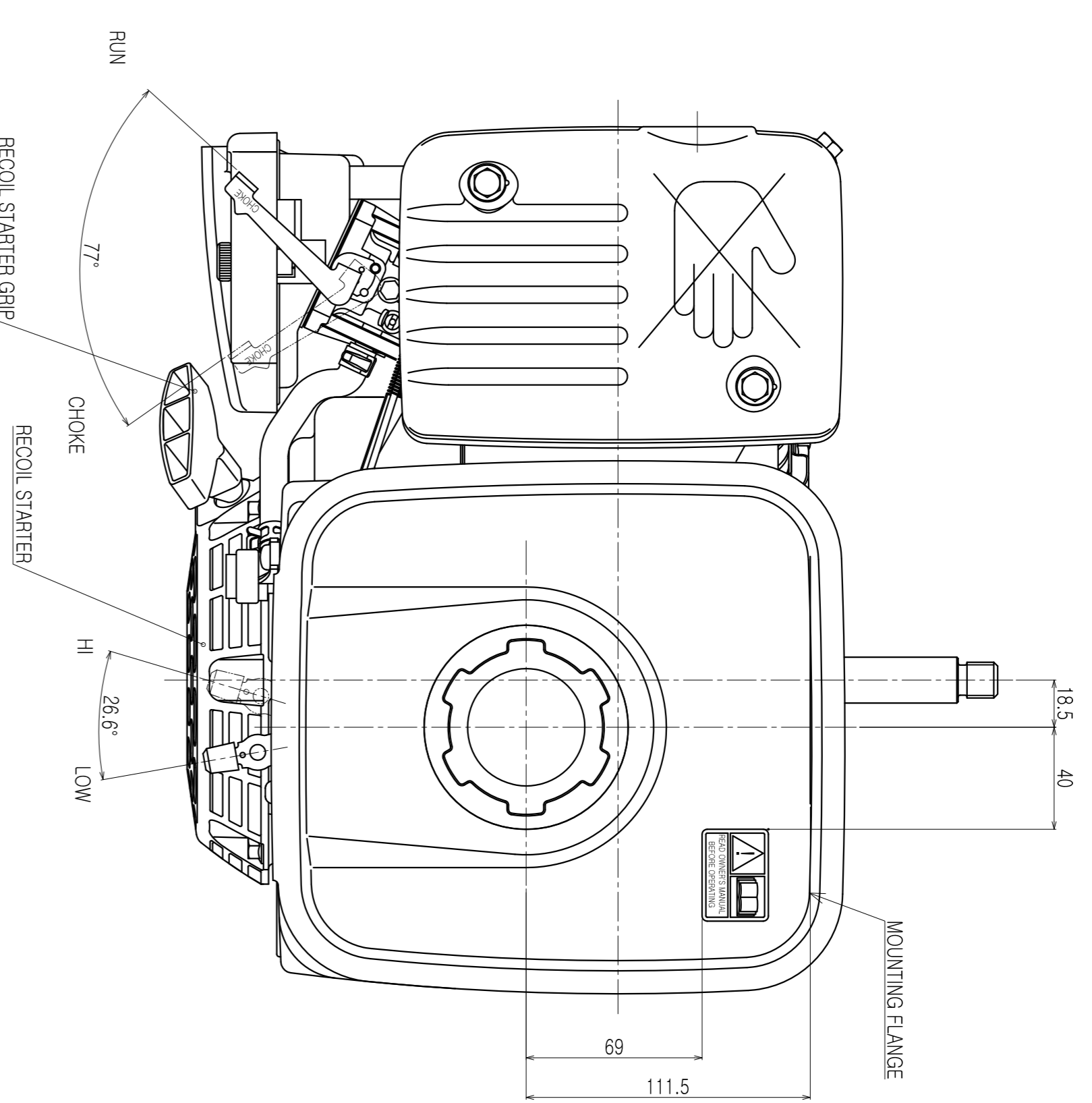
NOTE
 DIMENSIONS SHOWNWITHOUT ALLOWANCE
 ARE NOMINAL AND ARE SUBJECT TO PRODUCTION TOLERANCE.
 DIAGRAM



VIEW Q



VIEW P



名称	GT400	比例	1:2	标准	BM
形式	GT400	认可		绘图	
名称	ENGINE, INSTALLATION, GT400PN-P, ITZ		比例	1:2	标准
名称	ENGINE, INSTALLATION, GT400PN-P, ITZ		比例	1:2	标准

博敏集团 上海兴博实业有限公司